

ADDITIONAL BENEFITS

Roadside Assistance

You will receive 24/7 assistance with lockouts, tire changes, jump starts, fluid delivery and towing when you call toll free 888-737-4577.

Car Rental

You will receive rental car reimbursement for all qualified covered repairs.*

Trip Interruption

If you are away from home and your vehicle has a mechanical breakdown that is covered, we will reimburse you for meals and lodging.*

Transferability

If you sell your vehicle with coverage remaining, you can transfer the coverage to the next owner.*

No Deductible

If you return to the dealer that sold you our contract, you will not have to pay a deductible.*

*Refer to your contract for specific information.



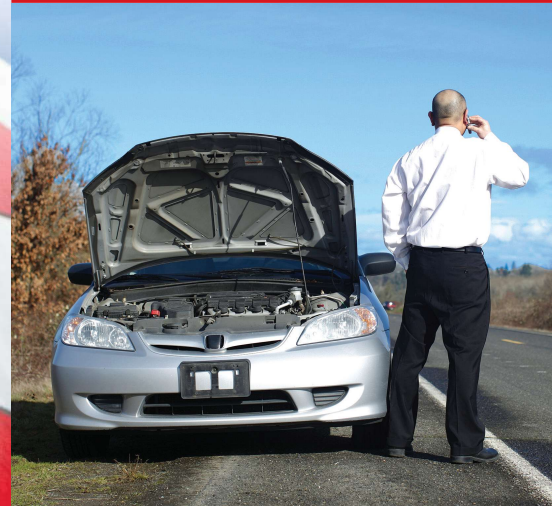
PROTECTION

With a Vehicle Service Contract from Liberty Shield, you are protected against unexpected repair costs that may result in significant out-of-pocket expenses. With today's advanced technology, repairs can be costly and are often unpredictable. You'll rest easy knowing that your vehicle will have coverage anywhere in the USA.



LIBERTY SHIELD[®]™

EXTENDED VEHICLE SERVICE CONTRACT



MECHANICAL BREAKDOWN COVERAGE FOR YOUR PROTECTION



LIBERTY SHIELD[®]™

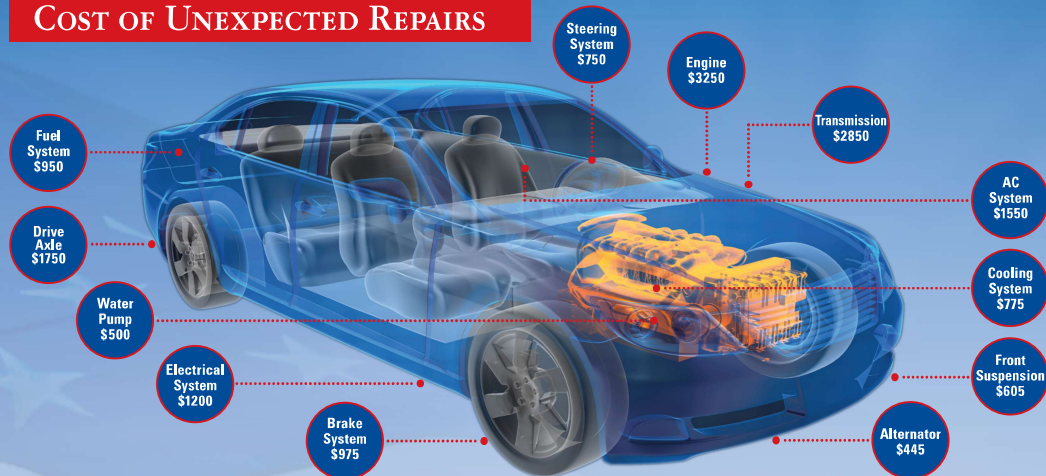
www.libertyautousa.com
833-771-0301

This brochure is not a service contract. It is an outline of the Liberty Shield Vehicle Service Contract. See your contract for exact terms, coverages and exclusions.

Your Administrator/Obligor under this plan is CARS Protection Plus, Inc./Florida CARS Protection Plus, Inc. (Florida License No. 32409). See your contract for more information.

© 2020 LIBERTY SHIELD

COST OF UNEXPECTED REPAIRS



VEHICLE SERVICE CONTRACT COVERAGE OPTIONS

	LEVEL 3 - Exclusionary*	LEVEL 2 - Comprehensive*	LEVEL 1 - Powertrain Plus*
Engine	✓	✓	✓
Transmission	✓	✓	✓
Drive Axle	✓	✓	✓
Fuel Systems	✓	✓	
Air Conditioning	✓	✓	
Heating	✓	✓	
Brake Systems	✓	✓	
Seals and Gaskets	✓	✓	✓
Fluids for Covered Repair	✓	✓	✓
Electrical *Major Components	✓	✓	
Electrical *Specialty Components	✓		
Suspension	✓	✓	
Steering Components	✓	✓	
All Original Factory Installed Components Other than what is Excluded	✓		

PLAN COVERAGES

LEVEL 3 - Exclusionary*

Liberty Shield's best coverage. It is similar to the full factory coverage that comes with a new vehicle. It covers all factory installed mechanical and electrical components except items listed as excluded, as well as vehicle maintenance items such as oil changes, tires, lightbulbs, belts, hoses and brake pads.

LEVEL 2 - Comprehensive*

Covers almost any expensive repair giving you peace of mind. In addition to what is covered in level 1 it also offers significant additional coverage for steering, brakes, ABS systems, suspension, electrical, air conditioning/heating, and the fuel system.

LEVEL 1 - Powertrain Plus*

This plan covers major systems including: engine, turbo or supercharger, automatic/standard transmission and transfer case, front and rear wheel drive, four wheel/all wheel drive, engine cooling systems and numerous electronic sensors. You are protected for the most expensive repairs that can occur.

COVERAGE OPTIONS

Eco-Shield*

- Spark plug wires
- Coil to spark plug boot and connectors
- Vapor and emission canisters
- Positive crankcase ventilation valve
- Distributor cap and rotor
- Smog pump, catalytic converter, muffler, and exhaust pipes
- High voltage vehicle drive battery

Tech-Shield*

- GPS/navigation
- Rearview camera
- Self park system
- Keyless entry system
- Instrument cluster/gauges
- Collision detection system
- Tire pressure monitoring system
- Head unit display/screen/DVD radio system

Extra Eligibility*

- Lift kits
- Oversized tires
- Diesel

COVERAGE COMPARISON

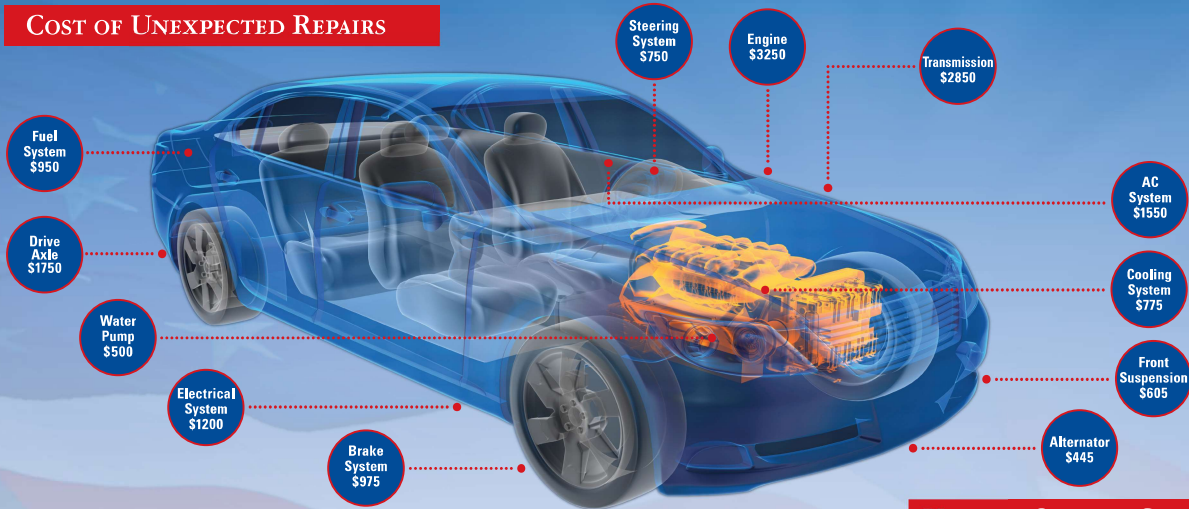
See your Service Contract for complete details



**LIBERTY
SHIELD**®™

	LEVEL			OPTIONS	
	1	2	3	Tech- Shield	Eco- Shield
ENGINE					
Lubricated parts contained within the engine block, Intake Manifold, Oil Pan, & Oil Pump	✓	✓	✓		
Timing Belt/Tensioner, Timing Chain/Tensioner, Serpentine Belt Tensioner	✓	✓	✓		
Turbo/Supercharger/Twin Turbo (installed by factory only)	✓	✓	✓		
Cam & Crank Sensor(s), EGR Valve & O2 Sensor	✓	✓	✓		
Fuel Injectors, Fuel Pump, Lift Pump & Transfer Pump		✓	✓		
AUTOMATIC TRANSMISSION/TRANSFER CASE					
Lubricated parts contained within the housing, Speed Sensors, Torque Converter & Valve Body	✓	✓	✓		
Conductor Plate, Mechatronics Unit & Transmission Cooler	✓	✓	✓		
MANUAL TRANSMISSION/TRANSFER CASE					
Lubricated parts contained within the housing	✓	✓	✓		
DRIVE AXLE ASSEMBLY					
4X4 Hubs, Axles, Constant Velocity Joints/Boots, Drive Shaft, Universal Joints & Wheel Bearings	✓	✓	✓		
Lubricated internal parts	✓	✓	✓		
FLUIDS, SEALS & GASKETS					
Cylinder Head & Intake Manifold Gaskets	✓	✓	✓		
Fluids (when required with covered component)	✓	✓	✓		
SUSPENSION					
Air/Coil/Leaf Springs, Ball Joints, & Upper/Lower Control Arms and Bushings		✓	✓		
STEERING COMPONENTS					
High Pressure Lines, Power Steering Pump/Motor/Gear Box & Rack and Pinion		✓	✓		
BRAKE COMPONENTS					
ABS Hydraulic Components, Calipers, Master Cylinder, Power Brake Booster & Wheel Cylinders		✓	✓		
ABS Control Module & ABS Wheel Speed Sensors		✓	✓		
AIR CONDITIONING					
Accumulator, Clutch, Compressor, Condenser, Evaporator & Refrigerant		✓	✓		
ENGINE COOLING SYSTEM					
Fan Clutch, Thermostat & Water Pump	✓	✓	✓		
Heater Core, Radiator & Recovery Tank	✓	✓	✓		
ELECTRICAL COMPONENTS					
Alternator and Voltage Regulator, Front & Rear Window Wiper Motors & Starter Motor and Solenoid		✓	✓		
Convertible Top Lift Motor/Pump, Mirror Motors, Sun Roof Motor & Trunk/Tailgate Actuator and Motor		✓	✓		
Distributor & Ignition Coils		✓	✓		
Door Lock Actuators/Switches, Seat Motors & Window Motors/Regulators/Switches		✓	✓		
Engine electric cooling fan motor		✓	✓		
Horn & Relay			✓		
Electronic Control Module (ECM)/Computer			✓		
Early Collision Detection System/Self Park Assist System				✓	
DVD/Entertainment System/Navigation System (Installed by Factory Only)				✓	
Alarm System and Keyless Entry Transmitter/Receiver (Installed by Factory Only)				✓	
Instrument Cluster, Speedometer, Odometer				✓	
EMISSION COMPONENTS					
Catalytic Converter					✓
Exhaust Pipes and Muffler					✓
High-Voltage Vehicle Drive Batteries					✓
MISCELLANEOUS					
Rental Benefits/Towing Reimbursement	✓	✓	✓		
24-Hour Roadside Assistance	✓	✓	✓		
All Original Factory-Equipped Mechanical & Electrical Parts (unless specifically excluded)			✓		

COST OF UNEXPECTED REPAIRS



ADDITIONAL BENEFITS

Roadside Assistance

You will receive 24/7 assistance with lockouts, tire changes, jump starts, fluid delivery and towing when you call toll free 800-418-9836.

Car Rental

You will receive rental car reimbursement for all qualified covered repairs.*

Trip Interruption

If you are away from home and your vehicle has a mechanical breakdown that is covered, we will reimburse you for meals and lodging.*

Transferability

If you sell your vehicle with coverage remaining, you can transfer the coverage to the next owner.*

No Deductible

If you return to the dealer that sold you our contract, you will not have to pay a deductible.*

*Refer to your contract for specific information.

VEHICLE SERVICE CONTRACT COVERAGE OPTIONS

	LEVEL 3 - Exclusionary	LEVEL 2 - Comprehensive	LEVEL 1 - Powertrain Plus
Drive Axle	✓	✓	✓
Engine	✓	✓	✓
Fluids for Covered Repair	✓	✓	✓
Seals and Gaskets	✓	✓	✓
Transmission	✓	✓	✓
Air Conditioning	✓	✓	
Brake Systems	✓	✓	
Electrical Major Components	✓	✓	
Fuel Systems	✓	✓	
Steering Components	✓	✓	
Suspension	✓	✓	
Electrical Specialty Components	✓		
Heating	✓		
All Original Factory-Equipped Components Other than what is Excluded	✓		

LEVEL 1 - POWERTRAIN PLUS	LEVEL 2 - COMPREHENSIVE	LEVEL 3 - EXCLUSIONARY
<div><div>Engine</div><ul style="list-style-type: none">• Cylinder Block• Cylinder Head• Timing Case/Cover• Timing Chain• Timing Belt• Tensioners• Gears• Sprockets• Guides• Serpentine Belt Tensioner• Vibration Damper• Oil Pump• Intake Manifold• Flywheel with Starter Ring Gear• Core Plugs• Valve Covers• Oil Pan• Turbocharger• Supercharger & Internal Parts• Wastegate Actuator• Oxygen Sensor• Mass Air Flow Sensor• ERG Valve• Crank Sensor• Cam Sensor• Seals and Gaskets<div>Engine Cooling System</div><ul style="list-style-type: none">• Water Pump and Housing• Fan Clutch• Thermostat• Radiator• Heater Core & Recovery Tank<div>Automatic Transmission</div><ul style="list-style-type: none">• Case and Internal Parts• Bell Housing• Pan• Torque Converter• Drive/ Flex Plate• Range Switch• Speed Sensors• Pressure Sensors• PRNDL Position Switch• Control Module• Valve Body• Mechatronics Unit• Conductor Plate• Servo Assemblies• Cooler<div>Manual Transmission</div><ul style="list-style-type: none">• Main Shaft• Counter Shaft• Gears</div> <div><div>• Chain</div><div>• Input Shaft</div><div>• Hub Assemblies</div><div>• Synchronizers</div><div>• Shift Rails</div><div>• Shift Fork</div><div>• Bearings</div><div>Front Wheel Drive</div><ul style="list-style-type: none">• Transaxle Case• Axle Shaft• Constant Velocity Joints & Boots• Differential Cover• Transaxle Speed Sensors• Transaxle Solenoid Assembly• Transaxle Electronic Controller• Wheel Bearings/Hub Assemblies<div>All Wheel Drive</div><ul style="list-style-type: none">• Power Transfer Unit• Viscous Coupler• Axle Housing• Constant Velocity Joints & Boots• Drive Shaft• Axle Shaft• Differential Carrier Assembly• Output Ball Bearing• Output Flange• End Cover• Overrunning Clutch• Vacuum Motor• Torque Tube• Pinion Spacer & Shim• Wheel Bearings/Hub Assemblies<div>Rear Wheel Drive</div><ul style="list-style-type: none">• Axle Housing• Axle Shafts & Bearings• Drive Shaft Assemblies• Drive Shaft Center Bearings• Universal Joints & Yokes• Wheel Bearings/Hub Assemblies<div>Four- Wheel Drive</div><ul style="list-style-type: none">• Transfer Case• Control Module• Shift Mode Assembly• Axle Housing• Axle Shafts• Drive Shaft & Assemblies• Center Bearings• Universal Joints• 4 x 4 Hubs• Yokes• Wheel Bearings/Hub Assemblies• Disconnect Housing Assembly</div>	<div><div>Suspension</div><ul style="list-style-type: none">• Upper & Lower Control Arms• Upper & Lower Bushings• Ball Joints• Leaf Springs• Air & Coil Springs<div>Steering Components</div><ul style="list-style-type: none">• Power Steering Pump• Power Steering Motor• Gear Box• Rack & Pinion• High Pressure Lines• Steering Box & Rack• Pump Housing<div>Brake Components</div><ul style="list-style-type: none">• Power Brake Booster• Master Cylinder• Wheel Cylinders• Calipers• ABS Hydraulic Components• Proportioning Valve• ABS Wheel Speed Sensors• ABS Control Mode<div>Electrical Components</div><ul style="list-style-type: none">• Starter Motor• Solenoid• Alternator/ Mounting Bracket• Voltage Regulator• Wiper Motor Front & Rear• Cooling Fan Motor• Distributor• Ignition Coils</div> <div><div>• Power Window Motors/ Regulators/Switches</div><div>• Power Seat Motors</div><div>• Power Seat Track Assembly</div><div>• Power Door Lock Actuators & Switches</div><div>• Power Trunk/ Tailgate Actuator & Motor</div><div>• Power Sunroof Motor</div><div>• Convertible Top Lift Motor & Pump</div><div>• Power Mirror Motors</div><div>• Manually Operated Switches</div><div>• Ignition Control Module</div><div>• Cruise Control Assembly</div><div>Air Conditioning & Refrigerant</div><ul style="list-style-type: none">• Compressor• Clutch• Pulley• Mounting Bracket• Condenser• Accumulator/Receiver Drier• Evaporator• Refrigerant<div>Fuel</div><ul style="list-style-type: none">• Fuel Pump• Fuel Injectors• Injection Control Module• Lift Pump• Transfer Pump• MAP/Air Charge Temperature Sensor• Intake Manifold Pressure Sensor• Throttle Position Sensor</div>	<div><div>Almost Everything</div><ul style="list-style-type: none">• Nearly all factory-equipped mechanical and electronic components are covered. Check your contract for exclusions.<div>Fuel</div><ul style="list-style-type: none">• Fuel Sender Assembly• Waste Gate• Intercooler• Supercharger Pulley• Pressure Regulator• Fuel Tank• Accelerator Pedal Assembly<div>Interior Climate & Comfort</div><ul style="list-style-type: none">• Idle Pulleys & Bearings• Serpentine Belt Tensioner• Expansion Valve• Orifice Tube• AC Pressure Switches• Blower Motor & Fan• Heater Core• Heater Control Valve• Control Cables• Ducts• Plenum Doors• Blower Motor Resistor• Condensor Cooling Fan Motor• Manual Climate Control Head• Metal Lines</div> <div><div>Accessories</div><ul style="list-style-type: none">• Heated Seat Grids• Rear Window Defogger/ Defroster• Memory Seat Motors/ Switches/Sensors/Module• Memory Steering Motors/ Switches/Module<div>Body Hardware</div><ul style="list-style-type: none">• Hood & Trunk Latches & Cables• Hood & Trunk Hinges• Hood & Trunk Springs & Torsion Bars• Hood & Trunk Hydraulic Lift Supports• Door Hinges• Door Handles• Glovebox Assembly• Ignition Lock Assembly• Door Jam Switches• Seat Track Assembly<div>Electrical Components</div><ul style="list-style-type: none">• Electronic Control Module (ECM)/Computer• Horn & Horn Relay</div>
TECH-SHIELD OPTION		ECO-SHIELD OPTION
<div><ul style="list-style-type: none">• Head Unit• Display• LCD Screen• DVD/Blu-ray Player• GPS/Navigation• Radio/CD Player• Rearview Back-up Camera• Bluetooth Connectivity• Phone Communication Systems• Alarm Systems• Keyless Entry Transmitter & Receiver• Early Collision Detection System</div>		<div><ul style="list-style-type: none">• Spark Plug Wires• Coil to Spark Plug Boots & Connectors• Vapor Canisters• Emission Canisters• Positive Crankcase Ventilation Valve• Distributor Cap & Rotor• PCV Valve• Gas Cap• Smog Pumps• Catalytic Converter• Muffler• Exhaust Pipes• High-Voltage Drive Batteries</div>